



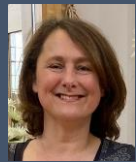
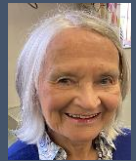
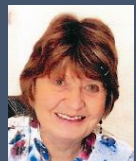
St Luke's Parish Profile

Living and Sharing the Good News of Jesus Christ

Contents



An Introduction to St Luke's	1
Introduction to the Vacancy by the Bishop of Sherborne	2
Introduction to the Deanery	3
Core Values	4
Our Mission Statement and Vision	5
Statement of Needs – Personal Profile	6
Worship	7-8
Prayer	9
The Parish	10
The Church Community	11-12
Staff and Volunteers	13
Children and Youth	14-16
Pastoral Care	17
Mission and World Church	18
Finances	19
Administration	20
Eco Church	21
The Estate – the Church	22-23
The Estate – the Vicarage	24
Schools	25
Parkstone, Poole and the local area	26-27
Strengths and Challenges	28



An Introduction to St Luke's

Thank you for taking the time to read this St Luke's Church Profile and learn about our Christian community.

We do hope it gives a flavour of who we are and what we do, as well as the beliefs and values that hold us together. These values motivate and inspire our shared life, ministry and mission here at St Luke's.

We would encourage you to visit our website at www.stlukesparkstone.org.uk, and you are very welcome to visit us in person.

If you have any questions, please do not hesitate to email churchwardens@stlukesparkstone.org.uk.

St Luke's PCC

Introduction to the Vacancy by the Bishop of Sherborne

This post offers an excellent and exciting opportunity for the right candidate to bring their own skills and leadership gifts to a welcoming, and lively church.

The Parish enjoys a coastal and urban outlook within the Poole and North Bournemouth deanery, where the parish boundaries are porous and churches enjoy both a parish and an eclectic feel. St Luke's is set within a largely residential area, with the potential to further develop a community hub feel, making good use of its church plant with parish rooms and meeting space as a gathering place.

The church enjoys a good mix of lay and ordained leadership, with a children's worker and Licensed Lay Ministers (Readers), Lay Pastoral Assistants and some experienced retired clergy. There is potential to develop this even more to broaden the worship on offer throughout the week, particularly developing new forms of outreach to families, elderly residents and young people.

The deanery is extremely supportive and has worked hard in recent years to create supportive clusters of Clergy. The deanery has a clear plan and good leadership, which involves looking outside the life of the churches to the needs of the wider conurbation.

We are looking for an energetic leader who can build on the successes and growth of the past and who is able, working with others, to take the congregation on to the next stage of its life. Under the right leadership there is a great deal St Luke's can offer the wider church in terms of resources and expertise, and together with others the potential to reach out in creative ways to those who frequent Canford Cliffs, Sandbanks and Parkstone, either for leisure, work, holidays or permanently, as well as connect with businesses, and local organisations to make the Church and all we offer in Christ more visible.

In turn the parish offers a new well-appointed vicarage, some excellent schools and leisure activities for all ages on the doorstep, a warm welcome and a spirit of collaboration.

Ministry in Dorset is rewarding and enjoyable. Should you wish to know more about this post please do not hesitate to pay a discrete visit to take a look around or contact the Archdeacon of Dorset, the Ven Antony Macrow-Wood on 01202 695891.

We look forward to hearing from you.

Bishop Karen



Introduction to the Deanery

The Deanery of Poole and North Bournemouth is the largest in terms of population within the Diocese with around 180,000 people and growing. It comprises 21 parishes + Poole Missional Communities offering a diversity of worshipping life and expressions of church. It is served by 24 clergy of incumbent status in addition to many chaplains, curates, assistant ministers, Licensed Lay Ministers and Lay Pastoral Assistants and very many others who contribute wholeheartedly to the life of the church. Social demographics are interesting within this deanery with the very rich and wealthiest parishes sitting alongside the poorest. Like many seaside areas we are blessed with fantastic leisure opportunities and yet many within our communities struggle with issues of deprivation and poverty.

The Deanery itself is vibrant and there is a real sense of collegiality across different churchmanships and expressions of Church. The recently developed Deanery plan has collaboration across different parishes at its heart, encouraging working together across parish boundaries and offering support for different groups of ministry. The Chapter meets regularly as a whole group and also in smaller cluster groups generally, for lunch, support and prayer. As a Deanery we share training for Lay Pastoral Assistants and Lay Worship Leaders, and our synod meetings have regularly address wider issues of mission and ministry and explore new ways of working and being Church post- pandemic.

St Lukes is a great Church with a strong sense of purpose and genuinely seeking to move forward. I am confident that whoever comes to be Vicar at St Lukes would be well supported not only by the local Church but also by local clergy colleagues throughout the Deanery.

Revd Canon Lucy Holt Rural Dean Poole and North Bournemouth.

Our Core Values

- ▶ St Luke's is a mainstream Evangelical Church which seeks to make the Bible its main focus , faithfully allowing ourselves to be challenged and speaking the 'Truth in Love' as it relates to current issues. Acts 17 v 11
- ▶ With Jesus at the centre, we aspire to grow as disciples in order to spread the Good News of salvation and hope in challenging times. Matthew 28 v 18-19
- ▶ We consider that the Holy Spirit is present and working in the personal stories of each believer. We regard the Creed as a defining statement that expresses the core beliefs of Christianity and the Bible as our guide. 2 Timothy 3 v 15-17
- ▶ Prayer is foundational at St Luke's. We encourage one another to be prayerful in our dependence on God for His leading and provision in all things. 1 Chron 16 v 11
- ▶ We actively encourage Lay involvement by developing and using people's gifts, both natural and spiritual, also to show the fruit of the Spirit in our lives. 1 Peter 4 v 10
- ▶ We are a missional Church reaching outward supporting various people and organisations, locally and further afield. James 2 v 14-17
- ▶ Pastoral care is fundamental. We minister to people of all ages and circumstances within our fellowship and beyond. Galatians 6 v 2



Our Mission Statement and Vision

Mission Statement

We are a Christian family of believers, journeying in faith and understanding through Bible-centred teaching. Our heart's desire is to be equipped to share God's love with our community and beyond. We welcome and nurture those who are searching for answers to life's big questions and seek to be supportive of those with practical needs. As such, we aspire to the following:-

Vision

- ▶ We love to worship together
- ▶ It is our vision that all members of St Luke's should be part of a Connect Group (Home Group)
- ▶ It is our privilege to mentor younger people from toddlers to teenagers
- ▶ Because of all that Jesus did for us at the cross, it is our joy to reach out to others and love and serve as He did. We have a heart for mission
- ▶ We seek to base all we do and all we hope to achieve through prayer
- ▶ We are pastoral, supporting those in need and caring for one another
- ▶ Every person is a work in progress

Over the last twenty years we have grown in confidence in our core values and ministry. Covid has been a set-back and we are weaker in numbers than we were. However, we have a strong core and are ready to move forwards. We know that we need to grow again in order to strengthen our mission and be ready for all that the Lord will lead us into. So, our focus needs to be on evangelism and discipleship – especially of our large fringe.



Statement of Needs – Personal Profile

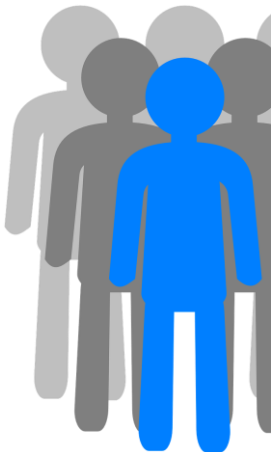
The appointing of a new incumbent of St Luke's comes at a significant point in the life of the Church. After the testing of lockdown, and the ending of a long incumbency, the Church has more than survived during the vacancy. We are now ready for a new phase, and we prayerfully anticipate that it will be one of outreach and growth, especially among families.

We are looking for servant-hearted leader at St Luke's who:-

- ▶ **Know who they are in Christ** – who holds to the doctrines of the Bible and can teach and inspire others with the Word of God.
- ▶ **Is an Evangelist** – who can help us shape a vision for growth, especially amongst our fringe of children and families.
- ▶ **Is a Good Shepherd** - a good communicator and encourager who can feed and love their flock, discipline them as followers of Jesus, and be able to recognise and develop gifts and talents in others. They should be able to relate to people of all ages.
Acts 20:28
- ▶ **Is a Visionary Team Builder** - who has a humble collaborative style of leadership, can manage Church teams and grow new leaders. They should have good interpersonal skills with employees and volunteers.
- ▶ **Is Creative in Ministry and Evangelism** - willing to apply different styles of teaching and preaching for all types of learner. They should be able to step out into the local community and be open to working with other Churches. Confident use of modern technology would also be an advantage. Our new incumbent should be happy to challenge us and make us think “outside the box”.
- ▶ **Is an Ambassador for ‘Safeguarding’**, leading from the top conversant with current legislation and committed to providing a safe environment for everyone. 1 Peter 2 v 13-16

We would pray for you regularly and support you in every way to fulfil your calling to this place. We would welcome you into the Church family, and love and care for you and where appropriate, for your family. Within the fellowship there are teams who are ready to support your ministry in spiritual and practical ways.

If this sounds like you and you think God may be calling you then read on ...



Worship

We believe that all our activities in our service for God are acts of worship, rooted in prayer with Christ at the centre. Several church members are also trained as Licensed Lay Ministers and Lay Worship Leaders and other members are gifted in preaching. The Worship Team meets regularly to pray and plan services. Others have joined the Music Worship group to sing and play instruments. During services, a number of church members undertake Bible readings and intercessional prayers, including the youth. Prayer underpins all Church activities and is a key feature of our Connect groups.

St Luke's continues to seek ways to increasingly and creatively involve our community, the congregation and especially the next generation, with worship, teaching and prayer, so that they may know the sure and certain hope of salvation found in our Lord and Saviour, Jesus Christ.

During Covid we had to abandon our more traditional, reflective 9am service and the evening service and so currently our services are as follows:-

10.30 am Sunday

Each Sunday at 10.30 am we hold a well attended, family service in Church, which we continue to offer online. Following the 10 minute Children's Worship slot within the service, the young people move to their respective activity groups in rooms at the back of Church. Once a month, prior to our main service, we run our popular Messy Church. Holy Communion is offered on the 3rd week of the month.



Worship continued

Wednesday 9.30 am

Our Midweek worship online at 9.30 am on Wednesdays continues to be popular, especially for the housebound. This 30 minute online service provides time for prayer, worship and reflection. Once a month this service is held in Church with Holy Communion offered, followed by refreshments.

Throughout the year

We have a team who kindly take communion to those who are housebound or who for whatever reason are unable to attend Church in person. Communion is also taken to Pennant House, our local Abbeyfield Residential home.

We celebrate the Christian Year through worship. Our well attended Christmas services, including Carols by Candlelight and our Christmas Eve nativity, are always popular. We hold Easter, Harvest, Remembrance and Memorial services.

To extend our invitations to these special events flyers are distributed to residents in the Parish, put on our website, Facebook, Mailchimp audience, and advertised on the noticeboard outside the Church.

As with all Church of England churches, St Luke's offers preparation and opportunity for weddings, blessings, funerals and baptisms. Being positioned so close to the sea it is not unusual to have baptisms on the beach! A service of Confirmation is held every few years.



In the future, we would love to reintroduce a wider variety of services including a more traditional, quiet reflective service based around liturgy. We would also hope to develop:- 'Relaxed Worship', an evening service for young people and families; a 'Wholeness and Healing' service; occasional 'Praise and Prayer' held outside; and an occasional service at Pennant House.

Prayer

Prayer is central to all we do here at St Luke's. We see it as a privilege to be able to pray for one another in pairs, small groups or as a whole congregation. We have a strong and committed Prayer Ministry Team.

We have a Prayer Room within the main Church which is an enclosed area for anyone wanting a quiet, safe space to pray.

A small group always prays together in the Prayer Room half an hour before our 10.30 am Sunday Service. During the service a member of our congregation will lead intercessional prayers. Our Prayer Ministry Team invites individual private prayer in the Prayer Room after the service.

On Wednesdays we pray together at our 9.30 am worship service as well as gathering online at 5pm to pray for our Church, the nation, world events and mission. Every two weeks on a Saturday morning we gather informally to pray for St Luke's and our community.

We have a Prayer Chain network. This is a group of people who commit to pray if they receive an urgent request through email.

We continue to open our Church daily for private prayer and stillness.

In the future we hope to re-establish the annual Prayer Walk on Rogation Sunday around the Parish.



The Parish

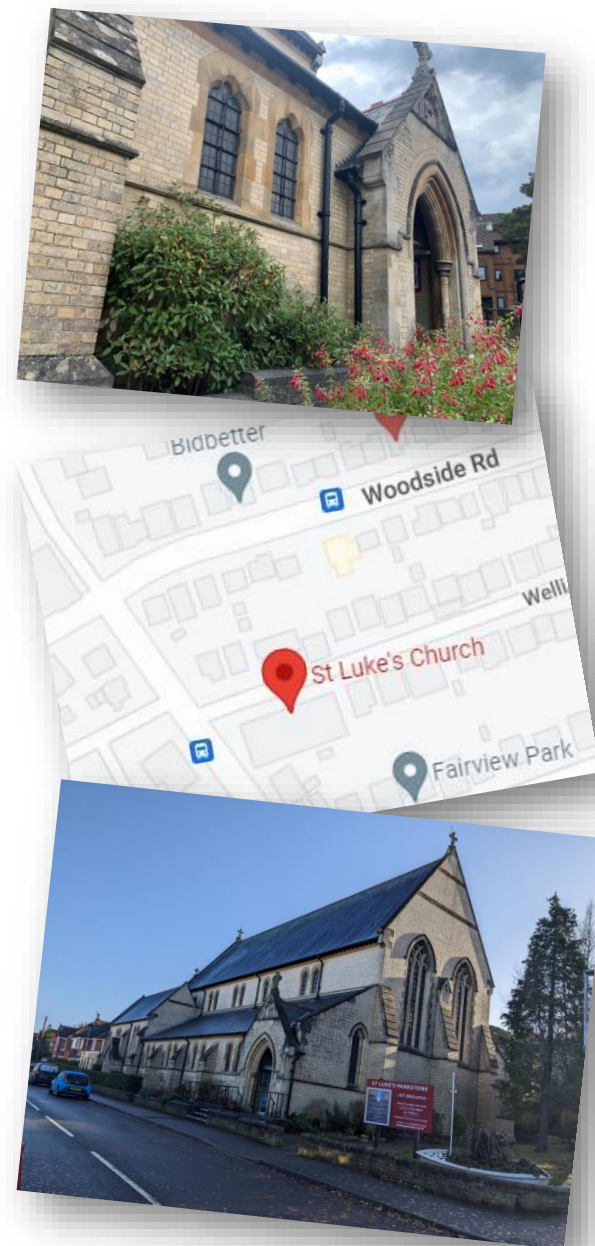
Geographically the Parish is very small with only around 3,000 to 4,000 residents.

It was formed in 1903 following a review of local parish boundaries. Lady Wimborne and others were concerned to have an evangelical presence in Parkstone and the foundation stone of St Luke's was laid in 1907. Lady Wimborne largely financed the building. The current Church Hall (37 Birchwood Road) was completed in 1966 and is well maintained and in regular use.

We are a parish church, serving the local community, with many of our congregation coming from beyond the parish. The road adjacent to the West end of the Church is one of the parish boundaries. We have permission to make contact, drop leaflets, etc. in the surrounding roads that are outside the parish. The Church sends out leaflets inviting the community to special services and events.

At election time, the Church is used as a Polling Station and this enables people with no other contact to see the Church from the inside. We also aim to witness to the parish and local community by keeping the Church open daily and there is a well-kept garden with thought provoking scriptures.

The parish is largely an affluent professional community. Witnessing to people of other faiths, cultures and secular views remains a challenge.



The Church Community

Since the retirement of the previous incumbent, members of the St Luke's, LLMs, LWLs, the PCC, staff and churchwardens continue to ensure the Church remains a welcoming and loving house of God, and there is a strong feeling of unity during this Vacancy. We are regularly visited by people looking for a Church who often remark on the warm welcome that they receive.

There are currently 170 people on the Electoral Roll of which 70% reside outside the parish. In 2020, as was the case with all churches, we suffered the effect of Covid, being unable to worship together in person. However, by introducing an online service we successfully sustained fellowship and weekly contact with the congregation and others, who joined in large numbers. Post Covid, numbers remain strong at services, averaging 70 – 90 adults with about 15 – 25 children, including new families and individuals. A large proportion of our fellowship is over 65 and mainly female. We seek to encourage the attendance and active service of younger members, including teenagers, and the whole family, especially the fathers.

In the future we would hope to instigate effective follow-up so that newcomers may be encouraged to become more involved with the Church family as whole life disciples. We also recognise the need to identify and reconnect with lapsed members. Anna, our Children's and Families' worker has had many creative ideas, and we have been encouraged by initiatives such as Messy Church. We hope that initiatives such as these may help to bridge the generation and culture gap.

Some members have been touched by their attendance at Christian Festivals such as Spring Harvest and the bi-annual 'St Luke's Church Weekend Away'. Following Covid, it is hoped there may be opportunities to develop these and introduce other activities, enabling us to grow together as a family.



The Church Community continued



Connect Groups

We have eight Connect Groups who meet regularly. Over 50% of our regular Sunday worshippers attend these. Many follow the themes set for our teaching on Sundays. During the Vacancy study notes for these have been written by a member of our fellowship who is a retired Vicar. These have been welcomed warmly by those who attend. Some members of the fellowship have used the notes individually.



Courses

We are interested in courses such as Alpha, in order to reach out to non-church members as well as our fellowship.

Mothers' Union

St Luke's Mothers' Union meets once a month and is open to anyone in the fellowship to attend. The meetings include a time of worship followed by speakers on a variety of subjects, craft sessions, etc. and an opportunity to chat over coffee and cake! Membership is quite small but does include two men! We use the name Families First to encourage younger members and hope that a wider membership will develop with the interest of a new incumbent. We also hope to enable a wider understanding of the work of Mothers' Union world-wide amongst the fellowship.

St Luke's ACTS

St Luke's ACTS is a drama group including several members of St Luke's and is based at the Church Hall.

Accessibility

Facilities for members with mobility and other issues - to enable easy access, we have a ramp leading up to the main Church entrance and an adapted toilet has been provided. We are a member organisation of the National Dementia Action Alliance and became a 'Dementia Friendly Church'.

Ethnic Minorities

We have a small number of those from ethnic minorities who attend the Church and are happy to welcome more.



Staff and Volunteers



We have four salaried staff at St Luke's: A full time Children's and Families Minister; a part time Administrator; a Church Hall caretaker (part time); and the services of a musical director/organist who plays on alternate Sundays.

We are grateful for the help of a retired vicar who, during the Vacancy, has been a considerable support in planning services, preaching, offering themes and notes for our Connect Groups. This has been a great encouragement.

We also have an enthusiastic team of volunteers who assist in keeping the Church running:-

- ▶ Two churchwardens
- ▶ A Parochial Church Council (PCC)
- ▶ A Standing Committee which discusses general Church Matters to ratify with the PCC
- ▶ Four Licensed Lay Ministers (Three of them P.T.O) and a fifth in training
- ▶ Several Lay Worship Leaders
- ▶ A Worship Music Team
- ▶ Sidespeople
- ▶ A Prayer Ministry Team
- ▶ A Pastoral Team and fourteen Lay Pastoral Assistants
- ▶ Volunteers for youth and children's work
- ▶ A Treasurer and Finance Team
- ▶ Volunteers on a variety of rotas
- ▶ A Fabric Team
- ▶ A Church Hall team
- ▶ A Flower Team
- ▶ A Qualified Safeguarding Officer who ensures that we comply with current best practice and delivers safeguarding training
- ▶ A retired verger who still makes a significant contribution
- ▶ A few individuals who regularly clean parts of the Church and maintain the garden

Church members are encouraged to volunteer and become involved in the life of the Church.

Children and Youth

Our Children's Ministry reflects our wider St Luke's Vision in encouraging children to become lifelong disciples of Christ. We do this by focusing on the three areas of our Children and Youth Mission Statement; **"We gather, we grow and we go'.** We structure our teaching around this format.

On Sundays the children and young people stay in the service for the first 10 minutes before they go out to their age specific groups. During that 10 minute period, there is a dedicated children's slot which includes an interactive element to the service.



First Steps is for 0-3 year olds. We have space to play, read Bible stories, do crafts and sing songs.

Stepping Stones is for Reception to Year 6. We have a more structured approach to help the children engage more with Bible teaching.

Pathfinders is our group for Year 7+ where we spend time unpacking stories from the Bible and apply them to our everyday lives.

Messy Church

Once a month on a Sunday, before the main service, we have Messy Church with breakfast where we join together for some worship time and activities around a theme.



Children and Youth continued

During the week we offer the following:-

Parents and Toddlers

Parents and Toddlers takes place one morning a week in term time, where we open the Church for families in the community to come with their preschool children for various activities including free play, craft, and song time. Refreshments are provided for the parents and the children throughout the morning. This group's aim is to show the love of Jesus through building relationships with families from the community. Families are invited to join us for special Church events. This group is well attended and has been serving the community for many years in various forms.

Youth Club

Youth Club is a space for young people Year 7+ to have fun, play games, eat food and have a short time of reflection. This is held in the Church Hall, during term time, serving a mixture of young people from Church and their friends.

Youth Events

Various events happen throughout the year such as: Easter 'Eggstravaganza', Families BBQ, The Light Trail (Halloween alternative), Christingle and other Christmas events for families. All of these events are widely publicised to include the general fellowship of the Church and the local community.

At St Luke's there is an opportunity, within the Youth Ministry area, to improve engagement with young people after they start secondary school. In the future we would like to develop a stronger team to enable this and to grow the numbers in our other age groups. Also before Covid St Luke's held a Summer Holiday Club which we would like to re-establish in the future.



Children and Youth continued

Girlguiding

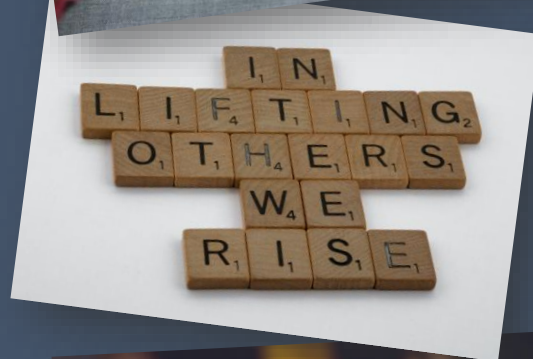
Three sections of Girlguiding are sponsored by St Luke's under the title 9th Parkstone – St Luke's. We have full units of Rainbows (4 to 7 years), Brownies (7 to 10 years) and Guides (10 years +). These Units are all very active with full and exciting programmes both for the weekly meetings at the Church Hall and residentials and camps. All the Leaders and a number of the girls are members of St Luke's.

Our Girlguiding Leaders are all experienced and well qualified, as well as holding a valid DBS and have undertaken Safeguarding Training.

Our hope for the future is that our Girlguiding activities can be integrated more into the life of St Luke's and have a higher profile. The Leaders and the Children's and Families' Minister are keen for this sponsorship to be developed.



Pastoral Care



One of our strengths is Pastoral Care. We have a Pastoral Team that provides emotional, social and spiritual support to those members who may be considered vulnerable or feel in need of support.

The Pastoral Team, including Lay Pastoral Assistants, meets regularly to highlight new needs, discuss any happenings in the community and support each other. Their activities include visiting and taking communion to the housebound, organising a monthly soup club, facilitating an annual memorial service, caring for the bereaved and hospital visiting. They also maintain close links with Pennant House .

Being an urban residential area we have many young families. Our outreach to that group is constantly reviewed with new people coming to our Parents and Toddlers, children's groups and youth clubs. We would love to expand our outreach to all members of those families.

Our vision for this parish is to show the love of Jesus to more people within the area, such as those living in flats and rented accommodation.

In the past we have held street parties, harvest suppers, fairs, flower festivals and holiday clubs. We are always keen to find new ways of engaging with our community.

Mission and World Church

At St Luke's we have a heart for mission and all Church members are involved in praying, helping and supporting our mission partners. For many years we have partnered with both international and local mission and we gift 10% of our income to this work. We also support mission through our 'Partnering with Mission Day' along with other fund raising for individual missions such as Christian Aid and Tearfund. Each Mission has a representative who is committed to building awareness of their respective outreach at St Luke's. They will occasionally invite guest speakers from the mission to visit. As we move forward into financial uncertainty post Covid we are in the process of reviewing the shape of our mission support.

International Mission

- ▶ OMF - *Heart for Asia – Hope for Billions*. Two former Church members Chris and Kesia Pain are working in the mission field in Japan
- ▶ CPAS – *Making Mission Possible*. St Luke's is one of 700 patronage churches in the UK supported by CPAS
- ▶ CMS – *Building Bridges and Sharing the Gospel*. Our CMS missionaries Fr Kevin and Jen Cable minister to their community in Jaffa, Israel
- ▶ The Bible Society – *God's Word for all Mankind*. Bible Society works to bring the Bible and its teachings to all communities, nationally and internationally
- ▶ Open Doors – *Standing Strong in the Battle*. With increasing levels of global persecution, Christians in dangerous places are upheld through prayer and resources
- ▶ Poole/Wau Partnership – *The Light Overshadows the Darkness*. In partnership with other local churches, this mission supports the work of the Wau Diocese in South Sudan
- ▶ Tearfund – *Relieving Suffering in Christ's Name*. Christian humanitarian aid organization.
- ▶ Christian Aid – *Helping the World's Poor Help Themselves*. Christian based charity providing humanitarian aid to those suffering from climate catastrophes

Local Mission and Others

St Luke's fellowship supports the following: PACE, Evangelical Alliance, Routes to Roots, Poole Foodbank, Waste not Want Not, Winter Refuge Clothing, Domestic Abuse Refuge, Samaritan's Purse, and aid for Ukraine



Finances

We have kept a healthy balance of funds well in excess of £50,000 for many years. Income and expenditure are reported monthly to the standing committee and PCC, using proprietary software from ChurchSuite and Data Developments. Total funds of the Church at the time of writing are approximately £105,000 (not including the fixed asset value of the Church Hall, which is nominally valued at £86,000).

The majority of our regular income for general funds is paid through bank credits. The amount we receive through plate collections, envelopes and ad hoc payments is small in comparison. We encourage giving direct to the CAF bank account. The Church has a SumUp card reader for one-off card payments.

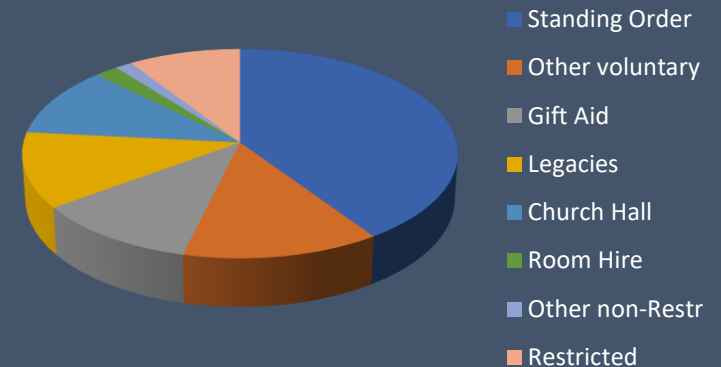
We have about 80 regular givers, some of whom give very generously and many members who, understandably, give more modest sums. Over the last couple of years the deaths of long standing members of the fellowship have had a negative impact on our income along with the ending of government support for COVID regarding the furlough payments. Despite this, and the loss of income from families who left when we were without a full-time youth worker, we have always paid our full share to the Diocese (Category A).

We are intending to have a stewardship programme in early 2023 to encourage increased giving especially amongst newer and younger members of the Church.

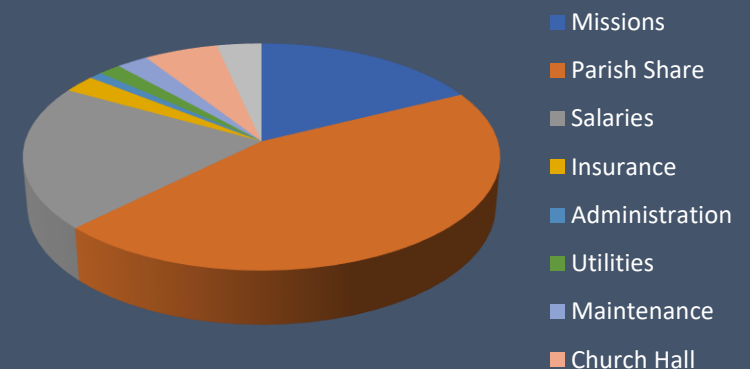
The Church's balance sheet, available on the Charity Commission website, gives a good summary of the overall financial position.

Expenditure is carefully managed. The main fixed payments are the parish share and staff salaries.

Total Income 2022
£213,000



Total Expenditure 2022
£197,000



Administration

Safeguarding

At St Luke's we recognise the importance of offering a safe place for young people and vulnerable adults, and encourage a culture of safeguarding vigilance amongst our members. Our appointed Parish Safeguarding Officer is experienced in safeguarding, and has also just completed training as a Safeguarding Trainer. In line with the Diocese of Salisbury's Safeguarding Policy, we adhere to safer recruitment, DBS checks for those volunteers and staff who require it, and encourage those who need it, together with the wider congregation, to undergo safeguarding training. We hold volunteer safeguarding data on Churchsuite and process volunteers requiring renewal through the 'Flows' module on the database.

Churchsuite

We subscribe to the full module Churchsuite package through which we hold and manage data on St Luke's members. We fully utilise the following modules; Address Book, Rota, Giving, Children's, Hall Bookings, and Church Calendar.

Communication

Each week we send out a St Luke's 'Newsheet' to around 230 people via Mailchimp, which provides us with a modern and dynamic way of communicating our events and notices. We also use email, Churchsuite, Whatsapp, Facebook, our Website, A Church Near You, the local AshleyLink magazine, flyers and our noticeboard outside the Church to communicate with our members and local community.

GDPR

We process personal data in the course of our legitimate activities, with appropriate safeguards in place, as a not-for-profit body with a religious aim, and on the basis that processing relates solely to members, former members or people who have regular contact with us. This information is not disclosed to any third party without consent.

Website

We have recently refreshed and revamped our website at www.stlukesparkstone.org.uk, which is updated weekly through the office.



Eco Church



St Luke's shares the widespread concerns felt about environmental matters. The Church seeks to operate with as little impact on the environment as possible. We have achieved the bronze level of the Eco Church Awards and also the bronze level in the PEA Green awards – a local scheme operated within the Poole area.



Some years ago we encountered problems with our electrical supply coping with the demand being placed upon it. This led us to take steps to reduce that demand and its impact on the environment. All the lights in the Church have been renewed over the last few years and are now either LED or compact fluorescent lights. This has also benefited our finances as well as making the electrical installation more resilient.



We are currently considering the situation with our church heating which is now over 30 years old and is a gas powered, hot air system. Efficiency and availability of spares are specific problems. We are looking at various ideas for a new and more economical system. This will involve a considerable amount of fund raising.



The Estate – the Church

Setting of the Church

St Luke's was constructed at the turn of the 20th Century and is not listed. There have been extensions to the Eastern end. Internal reordering and alterations have continued over the last two decades. The Church is surrounded by residential properties. The plot does not contain a graveyard or garden of remembrance. There is a small garden to the West end where there is a bench for private contemplation.

There is a four bedroomed Vicarage adjacent to the Church. There is also a Church Hall in a nearby road.

Social History

The Church and Hall are used by the local community for varied regular events and are hired out to both regular users and one-off events.

The Church Building in general

At the time of construction, the building was described locally as “a handsome commodious building in the thirteenth century and early decorated style”. The Church has a side chapel to the north side and what were originally clergy and choir vestries to the southeast corner. An extension was built in the 1980's to the East end of the Church to provide meeting rooms, a kitchen area and toilets. This area has a flat roof and has two independent access doors. The vestry on the south side is used as the Church office. From the beginning the Church contained wooden chairs and no pews. There is a chapel to the north of the Chancel used for prayer and more intimate services, enclosed with a light wooden framework and clear glass.



The Estate – the Church continued

The Church Building in detail

The Church is described by our Architect, Keith Loveless, as a moderately large town church. In 1926 the beautiful stained glass East window based on the anthem Te Deum Laudamus was installed. In 2005 the main North porch was enclosed by use of glass doors and external ramps were installed to assist entry for those who are less mobile. On immediately entering the Church, there is an open area which includes the font and a space, with tables and chairs, for sharing fellowship. This area also includes a kitchen, a small library and toilets (one accessible). A Prayer room was created next to this area and is used as a creche during services.

There is a pipe organ which is used regularly, and is well maintained.

Portable staging at the front of the Nave leads up the Chancel. Most of our services are conducted from here and this is where our music group is situated. We have a grand piano adjacent to the staging. The original choir stalls were removed from the Chancel to create a flexible area for more intimate and smaller services. Pre-Covid Holy Communion was administered from the Holy Table.

Fabric Condition

The Church is generally in good condition of repair. The last Quinquennial of the Church was carried out in November 2021. We have addressed those items deemed urgent and carried out some minor matters on volunteer working party days. There remain outstanding some significant repairs relating to windows and stonework but other financial priorities currently preclude us from carrying out this work. The toilets and kitchens are cleaned regularly by volunteers but the main Church and rooms are only cleaned occasionally, on volunteer working party days.

Church Hall



This is located in Birchwood Road, approximately half a mile away from the main Church building. It is a spacious, multipurpose building constructed in the 1960s. It is used regularly by the Church Youth Club and the Guiding Groups. It is also hired out during the week for regular activities and at weekends for special celebrations. This generates valuable income to run the Hall itself and occasionally supplements the Church funds. The Hall is in good condition thanks to the excellent committee managing it.

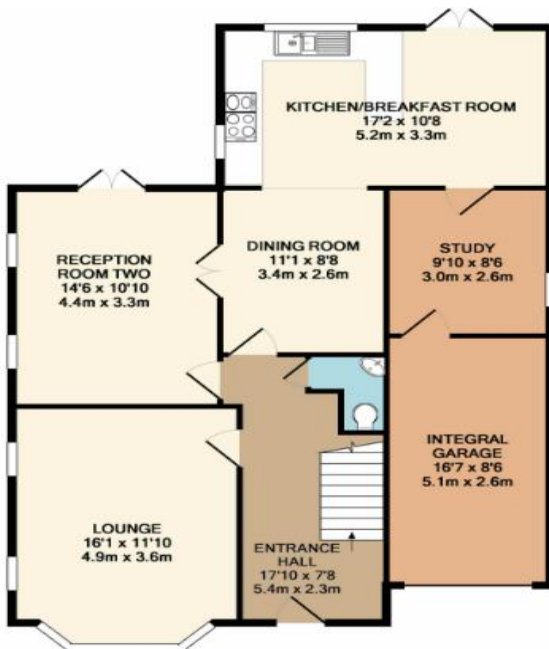
The Estate – the Vicarage



The Diocese have recently purchased 2 Wellington Road for use as the St Luke's Vicarage. Located next-door to the Church this provides the incoming incumbent with an extended 4 bedroomed house in a sought-after and quiet residential street.

The property offers spacious and versatile accommodation, comprising a large open plan kitchen/diner/snug stretching across the back of the house, with two sets of French doors opening onto the south facing garden.

The ground floor also offers a formal lounge with a feature log burner, study room, large entrance hall and downstairs WC.



The light and airy landing leads to four double bedrooms, modern fitted family bathroom and en-suite to master.

The property has an integral garage and off- road parking.

The garden to the rear of the property is mainly lawn with surrounding beds containing shrubs. There is a large, paved patio area immediately outside the French doors.



Schools

Our local state schools, which the vast majority of our Church families attend, are within easy reach of the parish. All these schools are popular and highly rated by OFSTED. They include; Lilliput Church of England Infant School, Courthill Infant School, Baden-Powell & St Peter's CE Junior School, Poole High School, St Edward's RC & CE School, Parkstone Grammar School (girls), and Poole Grammar School (boys). There are also options of private schools within Poole and Bournemouth. Bournemouth and Poole College and Bournemouth University are situated in the local area and further education colleges are accessible by train.

Bournemouth Collegiate School (preparatory), an independent school, is situated within our parish. Our Children's and Families Minister sits on their governing body and she often leads assemblies at the school as well as hosting special services at St Luke's.

We also partner with The PACE Trust (Programme for Applied Christian Education) who provide support to schools, delivering Christian education. We support them financially as well as offering them free use of our Church rooms.



Parkstone, Poole and the local area



Poole is an interesting and varied trading town. It is centred around the historic port including the fishing fleet and cross-Channel ferries, it also embraces such things as centres of heavy engineering, “high-tech” electronics and much more.

St Luke's Church is in the Parkstone district of the large conurbation of Bournemouth, Christchurch and Poole (BCP) Council in Dorset. Parkstone is serviced by several parishes, and is located two miles from the centre of Poole and three miles from Bournemouth.

BCP has a population of around 400,300 which has increased by 5.7% in the last ten years. It represents the 14th largest local authority in England and Wales and is becoming increasingly diverse with 12% of the population coming from a non-white British background (21% of children in schools identifying as non-white British). Sixty percent of residents identified as Christian. As with other large conurbations in the country, within BCP there are areas considered to be amongst the most and least deprived in the country.

St Luke's Church is situated in the BH14 residential location within easy reach of local amenities and transport links. Parkstone train station is half a mile away with direct links to London in under two hours. There is a frequent bus service to Bournemouth and Poole. Shops are available in walking distance and most major supermarkets are a short drive away. Poole has ferry connections to Jersey and France. Bournemouth International Airport is only six miles from St Luke's Church.

Parkstone, Poole and the local area continued

There are two NHS Trust general hospitals, one in Poole and one in Bournemouth, currently undergoing reorganisation. There are also private hospitals, a psychiatric hospital and two hospices in the local area.

St Luke's Church is only two miles from Poole Harbour, the second largest natural harbour in the world and three miles from Sandbanks beach. Situated in the harbour is Brownsea Island where Lord Baden Powell held his experimental camp, after which the Scouting movement was formed. The island is also famous for its red squirrels. The Blue Flag beaches at Bournemouth and Poole stretch seven miles long from Sandbanks to Hengistbury Head. The Sandbanks ferry will take you across to Studland, a National Trust area of natural beauty. A short drive will take you over to Corfe Castle, Swanage and Old Harry's Rock.

Poole town has a long and interesting history and Poole Museum is worth a visit. At the time of the Norman Conquest it was considered a fishing village, but nowadays its main industry is tourism. Poole is home to Sunseeker, the RNLI and several large banking and insurance corporations, all of whom are large employers in the area.

Bournemouth is the home of 'The Cherries' Premier Football Team. Poole Lighthouse Theatre is the home of the internationally acclaimed Bournemouth Symphony Orchestra. There are theatres, arts centres, concert halls, cinemas and museums within Poole and Bournemouth.



Strengths and Challenges

Strengths

- ▶ We have maintained an active Church during the Vacancy
- ▶ We seek to make Bible truths our main focus and to stand on the Word, faithfully allowing ourselves to be challenged and speaking 'Truth in Love' as it relates to current issues
- ▶ Our Children's and Families Minister working with our children on Sunday and in contact with our local private school. The development of 'one off' activities at Church and Parents and Toddler sessions has broadened to number of families on the edge of Church life
- ▶ The welcoming and family feel to the community of St Luke's. We seek to nurture those who are searching for answers to life's big questions and through pastoral care be supportive of those with practical needs
- ▶ We have a heart for Mission and support, both financially and practically, local and international partners
- ▶ A Church open every day, accessible to the wider community and used in many ways
- ▶ Connect Groups where scripture is studied, prayers offered for the group and wider world and fellowship shared
- ▶ Spacious Church Hall in good condition and adaptable for a large number of events
- ▶ Our strong tradition of prayer and pastoral care
- ▶ We continue to pay our share in full
- ▶ Our administrative and communication processes are modern and appealing (Mailchimp, Churchsuite, website)

Challenges

- ▶ The need to grow new willing volunteers
- ▶ The ability to reach out to young and middle aged family groups
- ▶ The need to follow-up of new and lapsed members
- ▶ Recognising gifts of the Spirit
- ▶ Growing our ministry to men
- ▶ Missing generations, and the need to create opportunities to foster the involvement of teenagers
- ▶ The possibility of using the building at different times of day/during week for worship and outreach
- ▶ Our Parish is small so we need better partnerships
- ▶ Financial uncertainty post Covid, especially after the increase in our share, which we pay in full

St Luke's offers an appealing opportunity to the right candidate in that it represents a platform for growth.

St Luke's Parkstone

Wellington Road

Poole

Dorset BH14 9LF

churchwardens@stlukesparkstone.org.uk

www.stlukesparkstone.org.uk